

## Why do we need a guide?

Drug and needle debris is a challenging issue for Grande Prairie, and our community is not alone. Cities everywhere are working to ensure their citizens are safe and healthy. In Grande Prairie, the Opioid Task Force is a committee of agencies and community members addressing drug and needle debris concerns.

Needles are used by people with certain health conditions and addictions. The majority of needles in our community are disposed of safely, but there is still work to be done. People who use needles and the community have a shared responsibility for safe disposal.

### What are the risks of touching a discarded needle?

Needles are not like regular garbage or litter, and require special care. Following the precautions and advice within this guide can eliminate the risk in touching or being poked by a needle.

The majority of people will not get sick if accidentally poked by a needle but there is still a possibility. Even if you can't see it, discarded needles may contain some of the blood or fluids from the person who used the needle. When viruses in blood are exposed to the open air most die within minutes to hours. However, there is no way to know how long a needle has been lying where you found it, so it is best to be safe. Call for assistance or use a needle disposal kit.

For more information on communicable diseases, visit: [myhealth.alberta.ca](http://myhealth.alberta.ca)

Revised April 2022



For a map of needle disposal bins, visit:  
[cityofgp.com/needledisposalguide](http://cityofgp.com/needledisposalguide)

780-538-0380  
[csd@cityofgp.com](mailto:csd@cityofgp.com)  
[cityofgp.com/needledisposalguide](http://cityofgp.com/needledisposalguide)

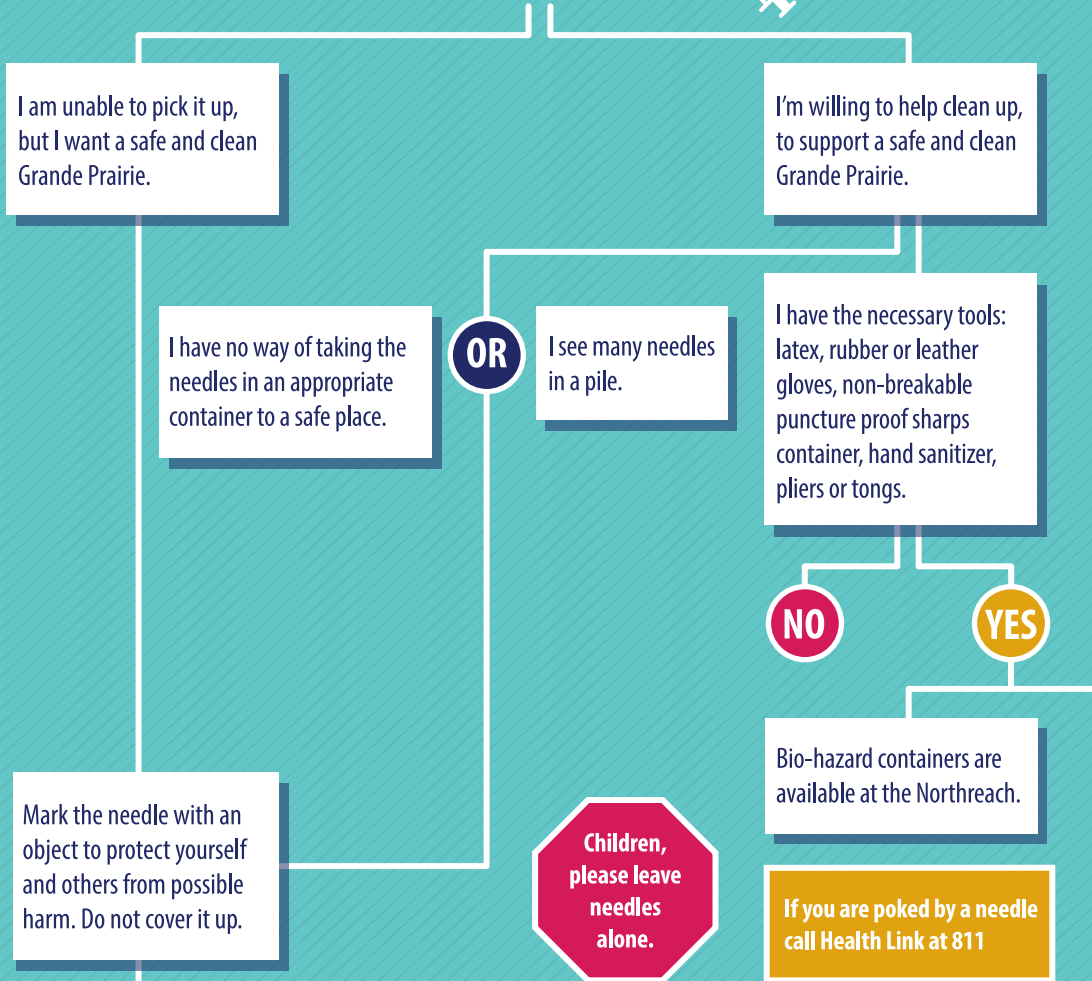
Everyone is Impacted  
GRANDE PRAIRIE OPIOID CRISIS  
[everyoneisimpacted.com](http://everyoneisimpacted.com)



# Grande Prairie Needle Disposal Guide

THE CITY OF  
**GRANDE**  
prairie

## I FOUND A NEEDLE



**NEEDLE PICKUP**  
**C·A·L·L**

**Mobile Outreach Program:** 780-830-7094  
Hours: 7 days a week from 7 a.m. – 11 p.m.

**Northreach Society Needle Hotline:** Call or text: 780-876-4277 to report needle debris. Leave a detailed message with street address, location, and a phone number. Photos can be sent by text.  
Hotline hours: Monday to Friday 8:30 a.m. – 4:30 p.m.

## HOW TO DISPOSE OF A NEEDLE SAFELY

- 1 TREAT ANY NEEDLE YOU FIND AS CONTAMINATED.** Put on latex, rubber or leather gloves to protect your hands from contamination. Use tong or pliers to carefully pick up the needle with the tip pointed away from your body.
- 2 PLACE THE SHARPS CONTAINER ON A STABLE SURFACE. DO NOT** hold the container while putting the needle inside. Place the needle point down into the container and close lid. Use a non-breakable, puncture-proof container such as a thick plastic bottle or sharps container.
- 3 FIND THE NEAREST NEEDLE DISPOSAL LOCATION**  
**Northreach:** Call 780-538-3388 for office address and hours.  
**Pharmacies:** Needles must be in a biohazard container. Call your pharmacy for more information.  
**Supervised Consumption Site:** Needles can be dropped off at the site near Wapiti House, 10101 97A St., 10 a.m. – 10 p.m.  
**Yellow Bin Needle Drop Locations:**
  - Towne Centre Mall, south parking lot
  - Beside Salvation Army/Soup Kitchen
  - Attached to the Wapiti House trash enclosure (West of Wapiti House)
  - By picnic tables on the east side of Wapiti House (within fence)
  - Saint Lawrence Centre
  - Alley behind Better than Fred's
  - Detox Entrance Northern Addiction Centre
  - Around the corner from Shoppers Drug Mart entrance Prairie Mall
  - Empty lot across from The Industry
  - Rotary Campground RV Dump Station
  - Parking lot at Muskoseepi Park across from the museum
  - Beside the garage in Community Village
  - Front door of the Northreach office
  - Olio's Convenience Store
- 4 WASH YOUR HANDS AND/OR USE HAND SANITIZER. DISINFECT ALL TOOLS WITH BLEACH IF YOU PLAN TO USE THEM AGAIN.**  
If you find other debris, pick it up with tongs and place it in a sharps container for safe disposal.